



The PH-1000 is a plastic robust coin hopper, designed for fast volume dispensing.

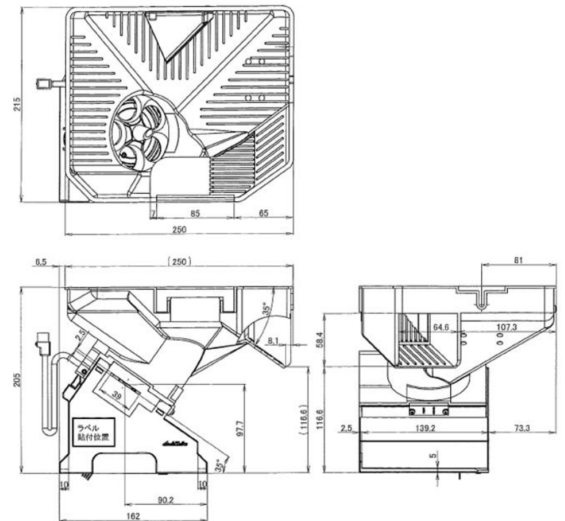
FEATURES

- Fast dispensing
- DC motor brake
- For coin range information contact our sales department.
- Opto-sensor for coin and token counting
- In built overflow
- Large bowl can hold approximately 1000 coins
- RoHS compliant
- Weight only 1.1 Kg

TECHNICAL SPECIFICATIONS

- **Supply Voltage**
24VDC +/- 10%
(0.5V peak to peak max ripple)
- **Current Consumption**
0.32 Amps(3.0Amps peak)

- **Opto Sensor Supply**
4.5 to 5.5 volts (0.1 V max ripple)
- **Opto-Sensor Current Consumption**
100mA max
- **Control Interface**
Parallel operation
- **Size**
205mm(H) x 250mm(D) x 215mm(W)
- **Environment: Temperature:**
-10°C to +60°C Humidity: 85%
- **Main Connector**
J21DF-08-KX-L by
JST Manufacturing Co. will mate
with B08B-J21DK-GGXR or similar



CONNECTOR J21DF-08-KX-L PIN DESIGNATIONS		
Circuit	Designation	Description
4A	+24V DC	Main supply
3A	GND	Main supply return
2A	Motor on (+)	Pull high to between 5 & 12v
1A	Motor on (-)	Pull down below 1V to drive hopper
1B	+5V DC	Opto Sensor supply
2B	Vout	Opto sensor output open collector (coin count)
3B	GND	Opto sensor return
4B	FG	Hopper ground

OPTO-SENSOR KI1480-AALF MAXIMUM RATINGS			
Supply volts	Vcc	6	Volts
Low level output current	IoL	50	mA
Output Voltage	Vo	28	V
Notes			
Output type open collector			
High beam at detect			

