



Quick Release Bar on the Hopper Bowl makes Maintenance easier.

The WH-2 is 85mm wide and can hold up to 1000 coins. This model is fitted with a release bar to simplify removal of the hopper head and can also be fitted with an extended hopper head which increases the capacity by up to 80%.

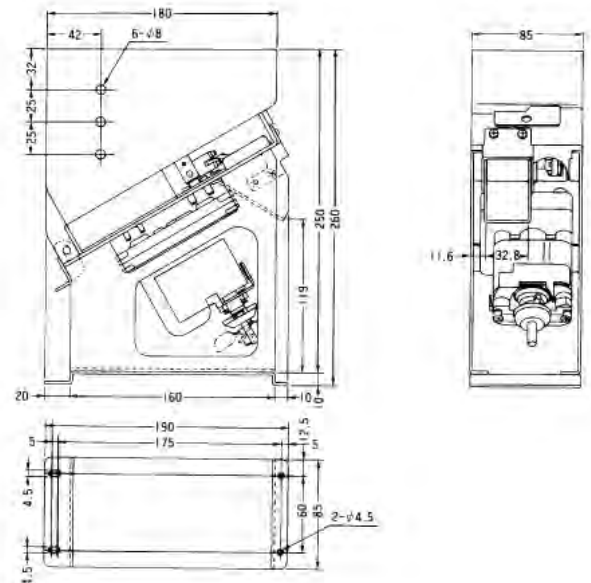
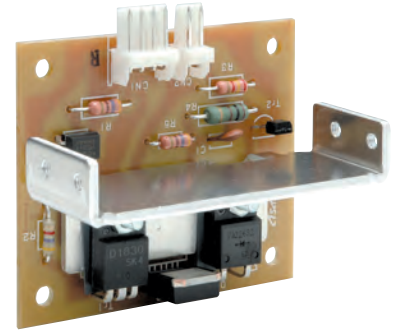
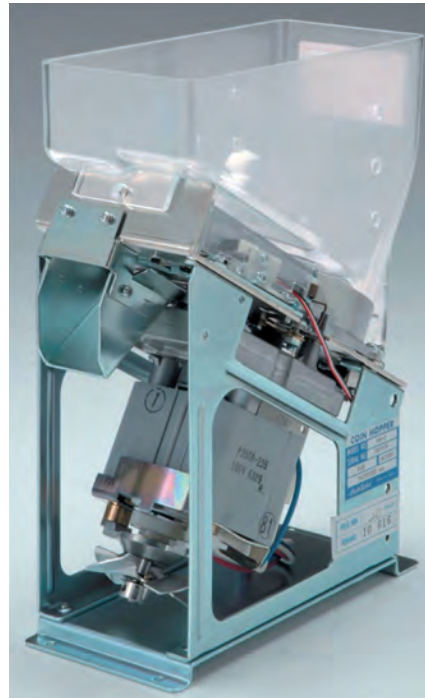
Features:

• **COMPACT DESIGN**

The Model WH-2, is 85mm wide and the second most compact hopper in the series. With the design based upon the WH-1 mechanisms, this hopper is most appropriate for amusement machines, changing dispensers in various vending machines, and dispensing mechanisms for money changers.

• **SIMPLICITY OF HOPPER HEAD REMOVAL**

Unlike the WH-1, this model is



equipped with a release bar. By simply pushing the release bar, the hopper head is disconnected from the base, thus allowing for easy maintenance.

General Specifications:

- **Applicable Coin Sizes:**
Diameter: 19.0mm ~ 28.5mm
1.3mm ~ 2.3mm
- **Coin Capacity (Examples):**
22.5mm Diameter: 900 coins
23.5mm Diameter: 800 coins
24.5mm Diameter: 700 coins (US 25¢)
- **Dispensing Speed:**
Approximately above 600 coins/minute*

* Dispensing speed may vary depending on motor gearbox deceleration ratio or coin specifications.

- **Coin Counting Method:**
Proximity Sensor

- **Motor Voltage:**
24VDC, 115VAC & 220VAC*

* Includes Thermal Protection & Instant Stop Device.

- **Current Consumption:**
115VAC: 4.3A
24VDC: 3.8A
(when stopping operation)

- **Operating Temperature:**
-10°C ~ +60°C

- **Weight:**
Approx. 8.16 lbs.
(AC Motor Specification)
Approx. 4.63 lbs.
(DC Motor Specification)

Custom models available please consult an Asahi Seiko Representative

